

## 645: Power steering equipment

XC90, 2003, B6294T, 4T65 AWD, L.H.D

26/4/2020



PRINT

## 645: Power steering equipment

Hydraulic  
pipes/hoses  
steering gear,  
replacing

**Note!** As the illustrations in this service information are used for different model years and / or models, some variation may occur. However, the essential information in the illustrations is always correct.

**Removal****Preparatory work**

Remove the battery lead. See Battery, disconnecting .  
Install lock grip pliers on the feeder hose for the power steering pump.

**Hint:**

Place paper or a cloth under the delivery line to absorb any spillage.

Remove the pressure line from the power steering pump.

**Diesel only**

Detach the clamp on the stay between the power steering pump/engine.

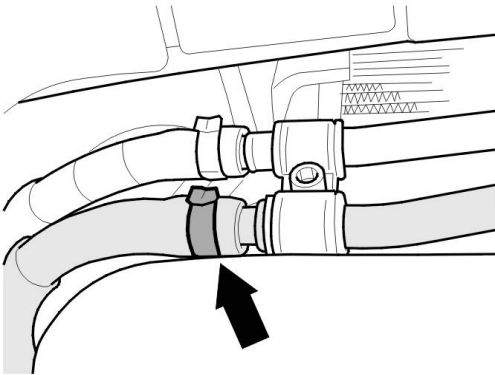
### Removing the sub-frame

Remove the sub-frame. See or Sub-frame front, replacing for 5- or 6-cylinder engines.

### Removing the return hose

Remove:

- the clamp for the oil cooler return hose
- the return hose.

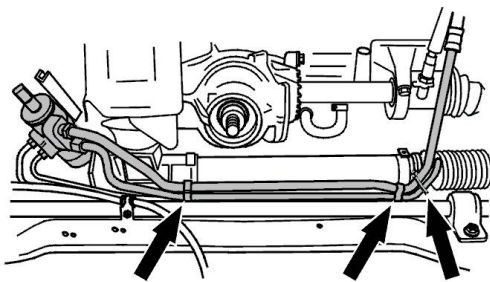
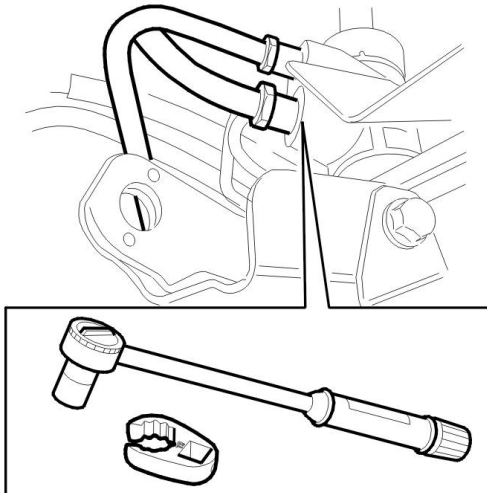


### Removing the return lines and delivery line

Place a container under the steering gear.

Remove:

- the return lines from the steering gear and drain the fluid
- the delivery line from the steering gear and drain the fluid.



Remove:

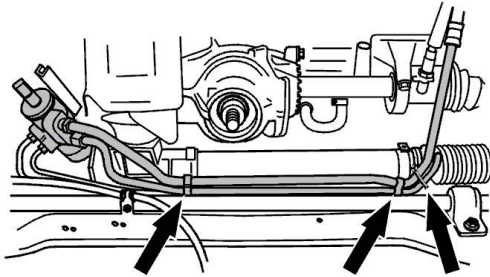
- the clips holding the pipes together
- the return line by pressing the pipe to the left and pulling down the end of the hose from the engine compartment
- the delivery line by pulling the hose end down from the engine compartment.

**Note! Note the routing of the lines / hoses.**

## Installation

**Note! For tightening torques, see Tightening torque .**

### Installing the return line and delivery line



Install the lines according to the noted routing.

Tighten the return line and the delivery line against the steering gear. See Tightening torque . Remove the lock grip pliers from the feeder cable.

**Note! Use a new O-ring on the pipe at the steering gear.**

Install the clips holding the pipes together.

### Installing the sub-frame

Install the sub-frame. See or Sub-frame front, replacing for 5- or 6-cylinder engines.

### Installing the return hose

Install the return hose on the oil cooler.

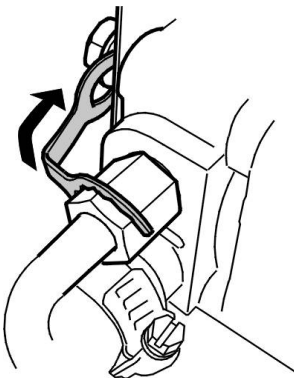
**Note! Use a new clamp.**

### Installing delivery lines

Install:

- the delivery line on the power steering pump. Tighten. See Tightening torque
- lock facing, M6.

Remove the lock grip pliers from the feeder hose.



**Note! Use a new O-ring on the pipe at the power steering pump.**

**Diesel only**

Install the clamp, 1 x M6, on the stay between the power steering pump/engine.

**Finishing**

Connect the battery lead.

Fill the reservoir with oil.

**Note! Use Volvo power steering fluid, P/N 116 1529, to ensure the correct oil quality.**

Repeatedly turn the steering wheel to full lock. Check and top up oil if required.

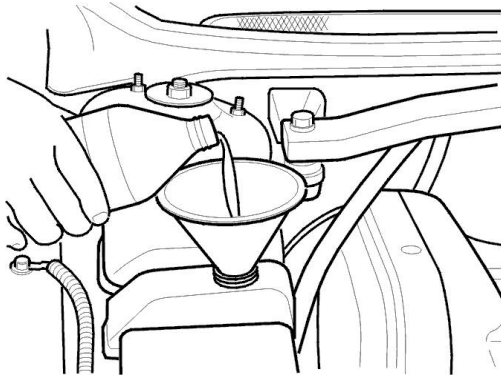
Lower the car.

Apply the parking brake. Start the engine.

A: Turn the steering wheel slowly to the right. Hold on full lock for 2 seconds.

B: Turn the steering wheel slowly to the left, hold on full lock for 2 seconds.

Repeat operations A and B approximately 10 times.



26/4/2020

**PRINT**