

645: Power steering equipment

XC90, 2003, B5254T2, AW55-50/51SN, L.H.D

25/4/2020



PRINT

645: Power steering equipment

**Hydraulic
pipes/hoses
steering gear,
replacing**

Note! As the illustrations in this service information are used for different model years and / or models, some variation may occur. However, the essential information in the illustrations is always correct.

Removal**Preparatory work**

Remove the battery lead. See Battery, disconnecting .
Install lock grip pliers on the feeder hose for the power steering pump.

Hint:

Place paper or a cloth under the delivery line to absorb any spillage.

Remove the pressure line from the power steering pump.

Diesel only

Detach the clamp on the stay between the power steering pump/engine.

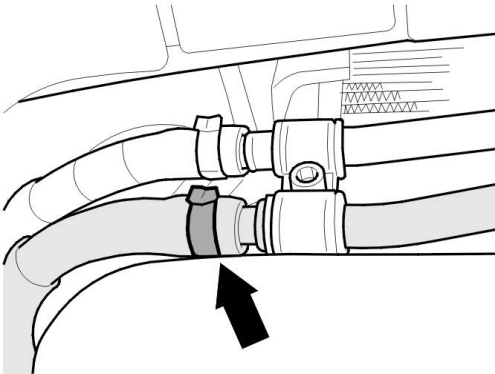
Removing the sub-frame

Remove the sub-frame. See Sub-frame front, replacing or Sub-frame front, replacing for 5- or 6-cylinder engines.

Removing the return hose

Remove:

- the clamp for the oil cooler return hose
- the return hose.

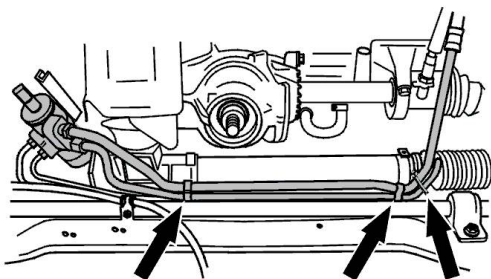
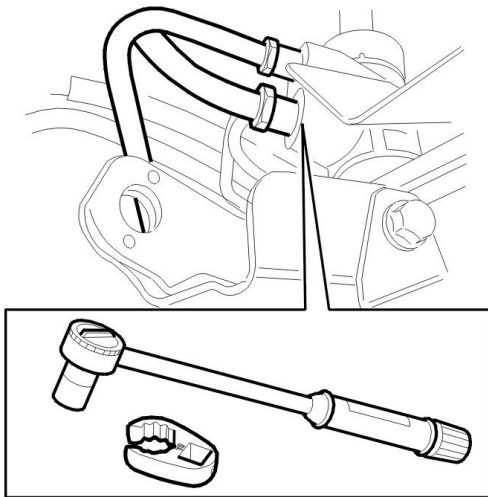


Removing the return lines and delivery line

Place a container under the steering gear.

Remove:

- the return lines from the steering gear and drain the fluid
- the delivery line from the steering gear and drain the fluid.



Remove:

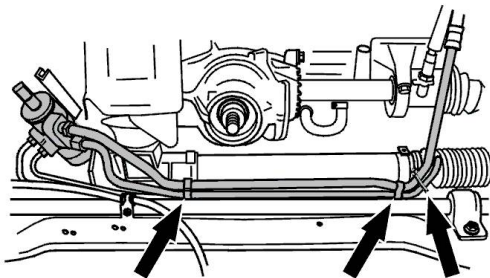
- the clips holding the pipes together
- the return line by pressing the pipe to the left and pulling down the end of the hose from the engine compartment
- the delivery line by pulling the hose end down from the engine compartment.

Note! Note the routing of the lines / hoses.

Installation

Note! For tightening torques, see Tightening torque .

Installing the return line and delivery line



Install the lines according to the noted routing.

Tighten the return line and the delivery line against the steering gear. See Tightening torque . Remove the lock grip pliers from the feeder cable.

Note! Use a new O-ring on the pipe at the steering gear.

Install the clips holding the pipes together.

Installing the sub-frame

Install the sub-frame. See Sub-frame front, replacing or Sub-frame front, replacing for 5- or 6-cylinder engines.

Installing the return hose

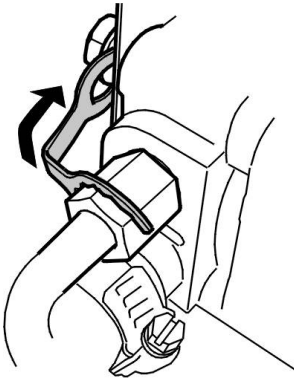
Install the return hose on the oil cooler.

Note! Use a new clamp.

Installing delivery lines

Install:

- the delivery line on the power steering pump. Tighten. See Tightening torque
- lock facing, M6.



Remove the lock grip pliers from the feeder hose.

Note! Use a new O-ring on the pipe at the power steering pump.

Diesel only

Install the clamp, 1 x M6, on the stay between the power steering pump/engine.

Finishing

Connect the battery lead.

Fill the reservoir with oil.

Note! Use Volvo power steering fluid, P/N 116 1529, to ensure the correct oil quality.

Repeatedly turn the steering wheel to full lock. Check and top up oil if required.

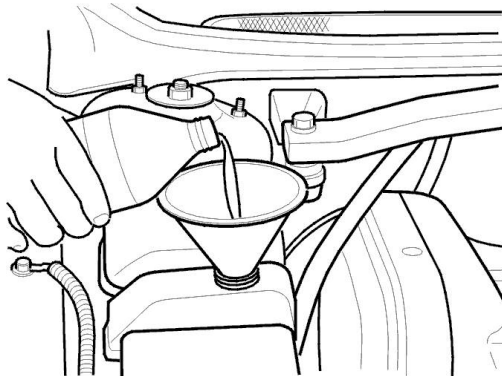
Lower the car.

Apply the parking brake. Start the engine.

A: Turn the steering wheel slowly to the right. Hold on full lock for 2 seconds.

B: Turn the steering wheel slowly to the left, hold on full lock for 2 seconds.

Repeat operations A and B approximately 10 times.



25/4/2020

PRINT